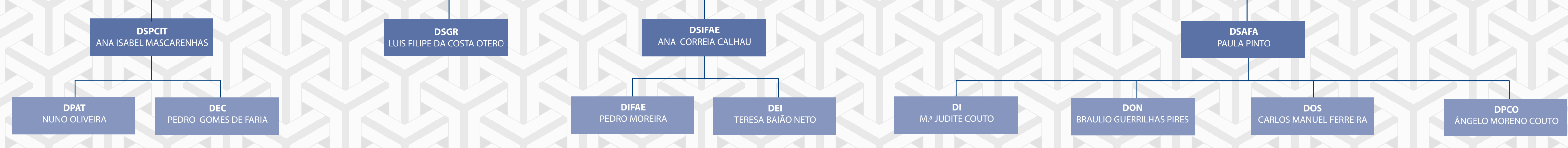


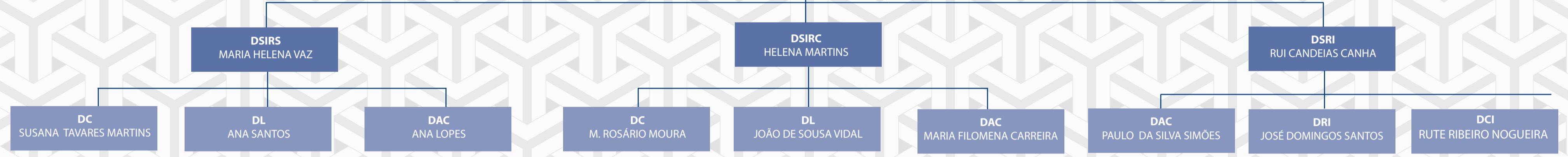
INSPEÇÃO TRIBUTÁRIA
SDG - ANA PAULA NETO



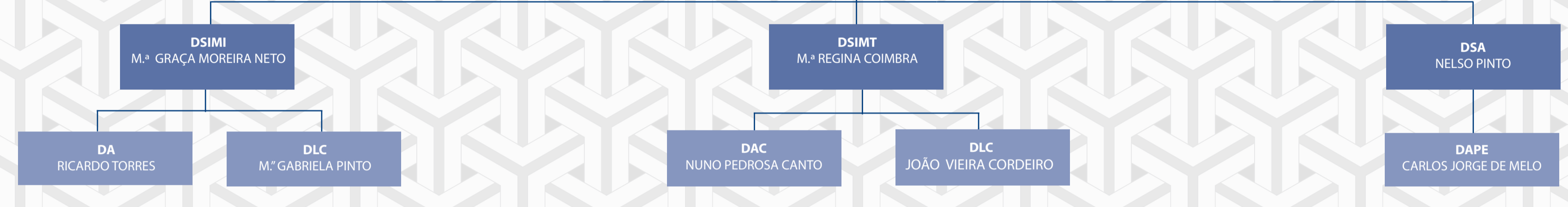
COBRANÇA
SDG - OLGA PEREIRA



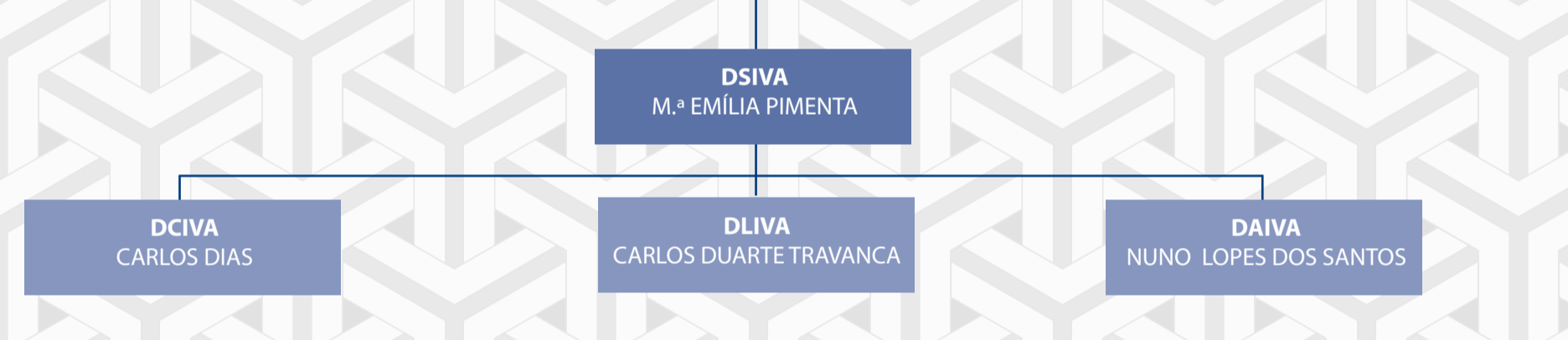
GESTÃO TRIBUTÁRIA - IR
SDG - TERESA GIL



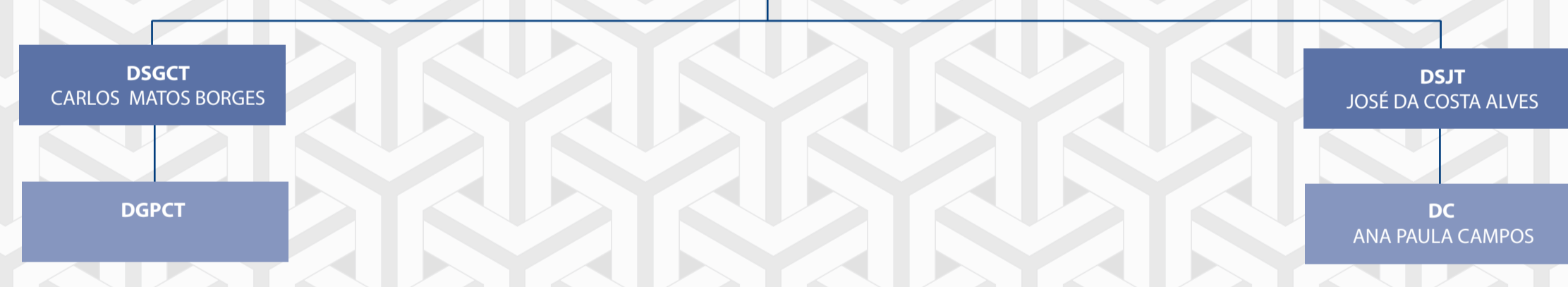
GESTÃO TRIBUTÁRIA - PATRIMÓNIO
SDG - LURDES FERREIRA



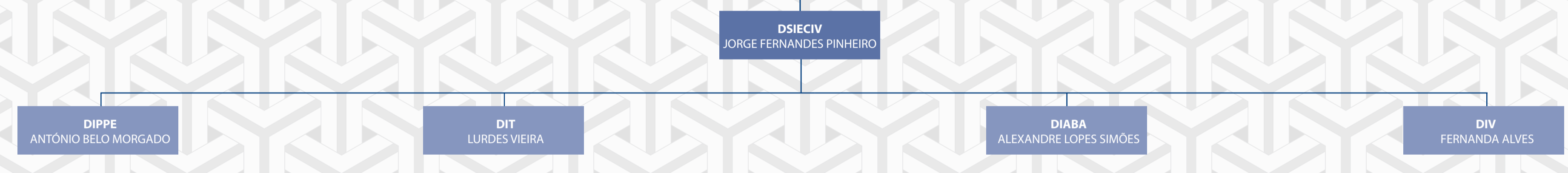
GESTÃO TRIBUTÁRIA - IVA
SDG - MIGUEL CORREIA



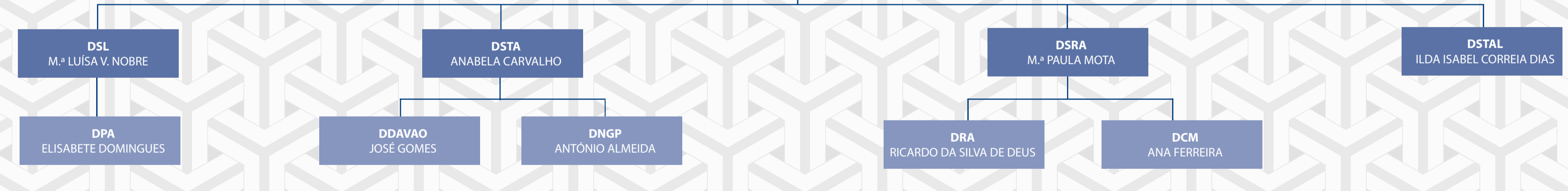
JUSTIÇA TRIBUTÁRIA E ADUANEIRA
SDG - ANA CRISTINA BICHO



GESTÃO TRIBUTÁRIA - IEC
SDG - BRIGAS AFONSO



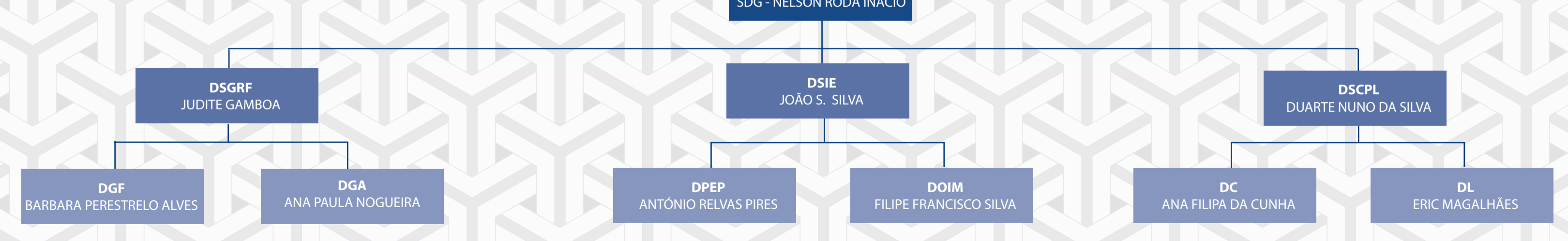
GESTÃO ADUANEIRA
SDG - ANA PAULA RAPOSO



RELAÇÃO COM O CONTRIBUÍTE
SDG - NUNO FELIX



RECURSOS FINANÇEIRAS E PATRIMÓNIO
SDG - NELSON RODRIGUES



RECURSOS HUMANOS E FORMAÇÃO
SDG - DAMASCENO DIAS



SERVIÇOS CENTRAIS

